

# CHECKLIST: ADAPTIVE CLOZE TEST

## Pre-test Checklist

Before students log into BrightFish Reading to start their adaptive Cloze test, review the pre-test checklist to ensure a good testing experience:

- Is each student device connected to the Internet?
- Is the student device running the latest version of the Chrome browser?
- Does each student have headphones to use during the test? (earbud headphones are fine)
- Have all firewall issues been tested? (IT or teacher: run step #3 in the test sequence: <https://www.brightfishlearning.com/test/>)
- Has each student been rostered in BrightFish Reading? (Classes tab; Manage class roster)
- Do you have enough time set aside for the test? The BrightFish Cloze test takes approximately 20 minutes to complete. (Some students may take a little longer.)

## Log into BrightFish Reading

Students will log into the BrightFish Reading program by launching the Google Chrome browser on their devices.

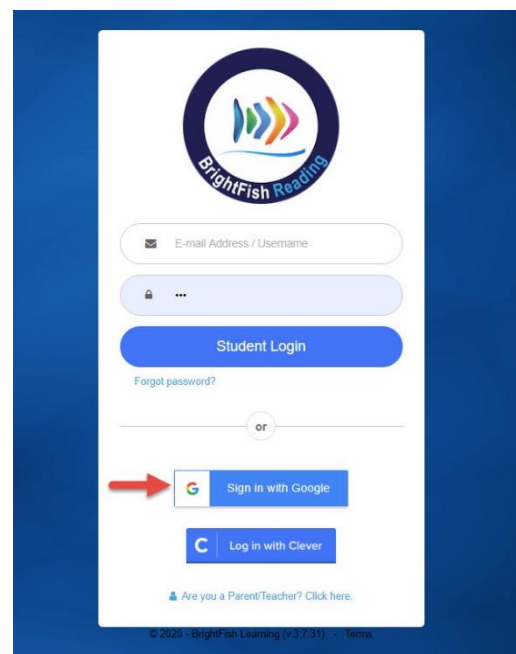
The link to access BrightFish Reading is here:

<https://go.brightfishlearning.com>

Add this link to favorites or the students' home screens.

Students should see the login menu shown at right and follow the steps below to access their BrightFish page:

1. Click on the button that says "Sign in with Google."
2. The student may be prompted to select a Google account if this is the first time logging into Google or if they are using a shared device. Select or type in the Google ID and password.
3. Students should now see the BrightFish Dashboard screen. A short video will play automatically, followed by a navigation tutorial that takes about 1 minute to click through.

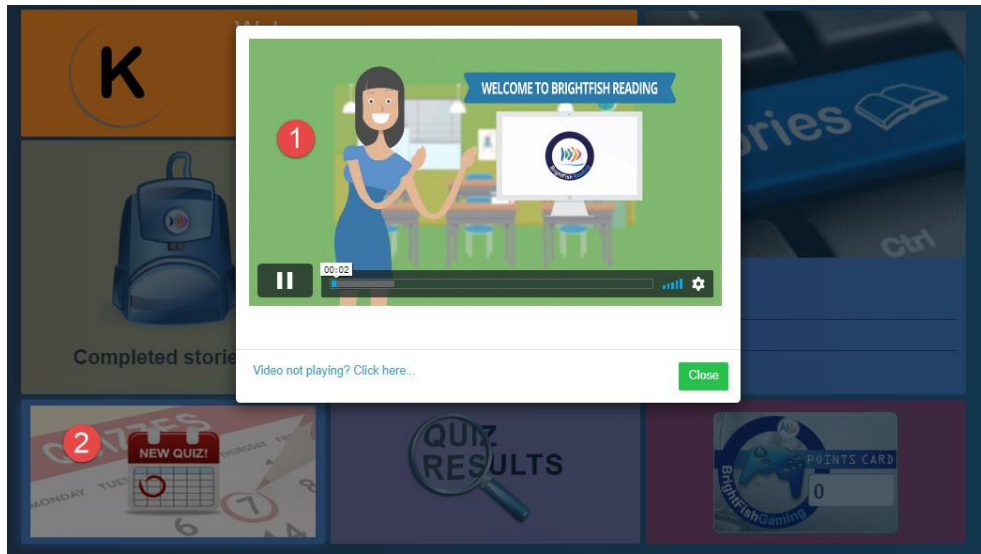


# CHECKLIST: ADAPTIVE CLOZE TEST

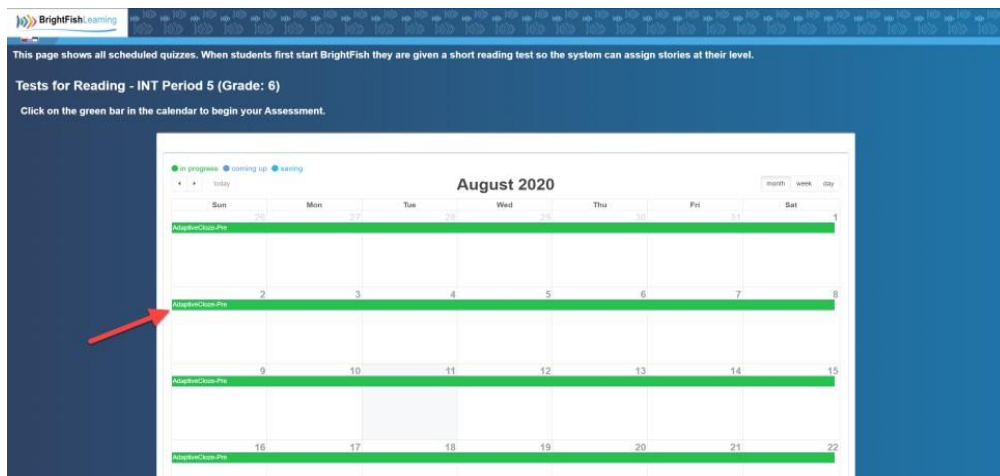
## Taking the Adaptive Cloze Test

To start the test, students will click on the New Quiz icon on their dashboards. The system will begin with a passage at a student's assigned grade level and then present a series of passages (up to 4) to find each student's independent, instructional and frustration reading levels.

**Step 1:** After watching the video and tutorial, click on the Quizzes Tile that says New Quiz.

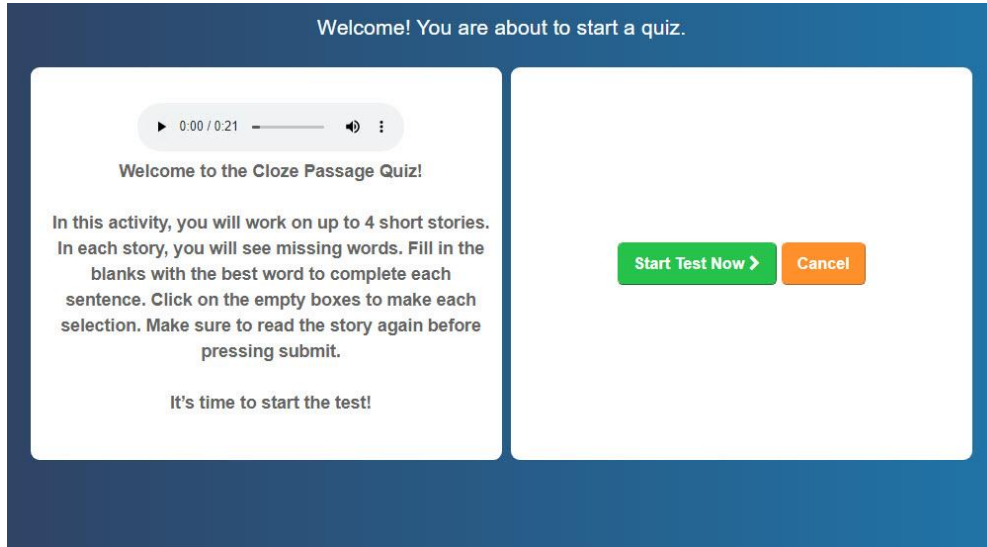


**Step 2:** Students will now see a calendar with a green bar. Click on the green bar to launch the test.

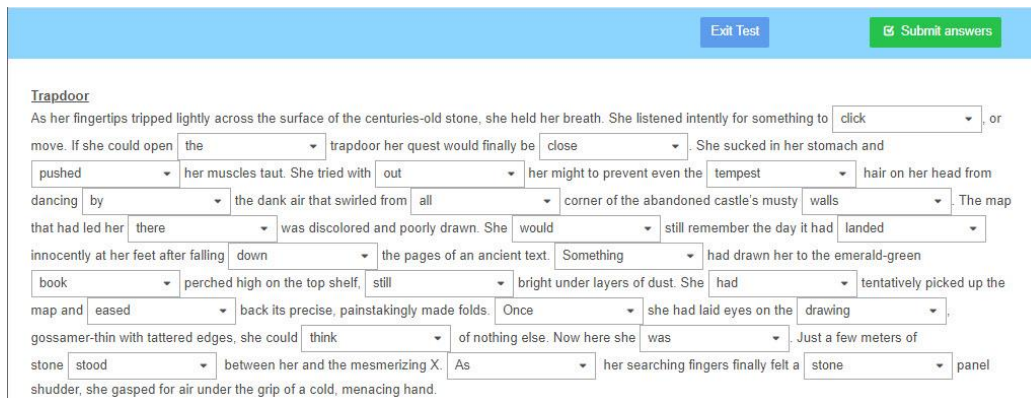


# CHECKLIST: ADAPTIVE CLOZE TEST

**Step 3:** Students will see a dialog box that introduces the test. Click “Start Test Now” to begin.



**Step 4:** The first test passage is assigned at the student’s grade level, based on its certified Lexile® measure (e.g. 4<sup>th</sup> grade test passages are in the 740L to 800L range). Students will click on the missing word to choose an answer from a drop-down menu that contains the correct response and two distractors. Once they fill in all of the missing words, students will select the “Submit Answers” button at the top to continue to the next passage.



# CHECKLIST: ADAPTIVE CLOZE TEST

**Step 5:** The next passage will appear (either 1 grade above the previous passage or 1 grade below, depending on the score on the first passage). Students will fill in the missing words, then click Submit Answers to continue to the next passage. Students may complete up to 4 passages in total.

Great job! Here is the next passage. Click on the 'Submit' button when you are finished.
Exit Test
Submit answers

**Medieval Legend**

A young boy pulls a magic sword from a block of stone. Everyone is astounded. The sword is  Excalibur, and the boy has just  what no one before him could . He has proven that he is  rightful heir to the throne  Britain. The boy becomes king; the tale  legend.

The young boy is none other  the legendary King Arthur of medieval . For many hundreds of years, the  has heard tales such as this  about Arthur and his adventures. These  have been some of the most  in world literature.

**Step 6:** Once the test is done, students will submit their test as final, which will take them back to the main dashboard screen. If students save and exit the test without submitting it as final, all work will be saved. They will click on the Quizzes tile the next time they log in to finish the test.

## Technical Specifications Reference

Firewall Access	<ul style="list-style-type: none"> <li>• <a href="https://*.brightfishlearning.com">https://*.brightfishlearning.com</a></li> <li>• <a href="https://*.tawk.to">https://*.tawk.to</a> (for integrated teacher chat support)</li> <li>• <a href="https://google.com/jsapi/*">https://google.com/jsapi/*</a> (for teacher reports)</li> <li>• <a href="https://www.gstatic.com">https://www.gstatic.com</a> (Google static content cache)</li> <li>• <a href="https://google.com/recaptcha/*">https://google.com/recaptcha/*</a> (Google SPAM control)</li> </ul>
Video Files	<ul style="list-style-type: none"> <li>• streams videos through <a href="https://*.brightfishlearning.com">https://*.brightfishlearning.com</a></li> <li>• Vimeo videos on <a href="https://player.vimeo.com/video">https://player.vimeo.com/video</a></li> </ul>
Supported Browsers	<ul style="list-style-type: none"> <li>• Chrome (latest) – recommended browser</li> <li>• Edge (IE 11 or below not supported)</li> <li>• Safari (latest)</li> <li>• FireFox (latest)</li> <li>• Silk browser for Amazon Fire HD</li> <li>• Touchscreen supported on all activities</li> </ul>
Supported Devices	<ul style="list-style-type: none"> <li>• iPad 4 and later, iOS 10 or later (landscape mode)</li> <li>• Laptops and Chromebooks (minimum resolution 1366x768)</li> <li>• Any desktop computer (minimum resolution 1024x768)</li> </ul>
Headphones	<ul style="list-style-type: none"> <li>• Any earbud headset</li> </ul>