

# K-12 BRIEF SPECIAL EDUCATION

## Classroom Snapshot: Spout Springs Elementary School, GA

Special Education teacher Meghan Holmes has been using **BrightFish Reading** with students in her resource room since the 2016-17 school year.

### Grade Levels

3, 4 and 5

### Student Referrals

Students are enrolled in **BrightFish Reading** based on Lexile or DRA scores from standardized assessments.

### Resource Room

Classes of 5-15 students use **BrightFish Reading** in the resource room. While students receive individualized instruction in **BrightFish**, Ms. Holmes focuses on data collection and small-group remediation.

### Regular access

**BrightFish** sessions are scheduled for 40 minutes at least 3 days a week. Some students also use the program from home.

### Motivation

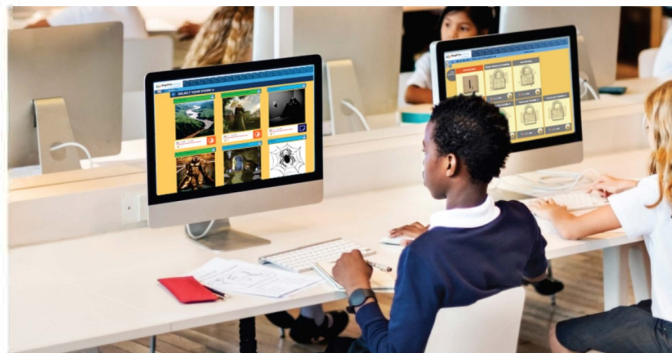
Ms. Holmes regularly announces who has the most hours or completed stories. Those students receive prizes for their hard work in **BrightFish Reading**.

### How she uses BrightFish data

Once students begin working in the program, Ms. Holmes utilizes error data from the student progress reports to drive small group instruction on missed concepts and standards. She also meets with students 1:1 to discuss their progress and feedback.

### Challenges and rewards

"At the beginning one of my students lacked the confidence to work in **BrightFish** independently. He would look for teacher support during each lesson. Now he leads our class in **BrightFish**. My students love to show me when they complete a story and get their certificates!"



### Did you know?

- Spout Springs Elementary School is one of 20 K-5 campuses in Hall County Schools, GA
- In the 2018 school report card, 60% of 3rd grade students at Spout Springs scored at or above grade level in reading, higher than the district and state.
- Students at 9 elementary and middle schools in Hall County use **BrightFish Reading** weekly as part of their IEPs.



Try BrightFish Reading today!  
Visit [brightfishlearning.com/trial](http://brightfishlearning.com/trial)  
or call Eric Moon at 770-789-1941.

