



# DAY 1 CHECKLIST: BRIGHTFISH READING

## Pre-start Checklist

When students log in to BrightFish Reading, they will watch a short video and then proceed to complete the Adaptive Cloze test to assign their starting menu of stories. Review the pre-test checklist:

- Is each student device connected to the Internet?
- Is the student device running the latest version of Chrome or another supported browser?
- Does each student have headphones to use during the test? (earbud headphones are fine)
- Have all firewall issues been tested? (IT or teacher: run step #3 in the test sequence: <https://www.brightfishlearning.com/test/>)
- Has each student been rostered in BrightFish Reading? (Classes tab; Manage class roster)
- Do you have enough time set aside for the test? The BrightFish Cloze test takes approximately 20 minutes to complete. (Some students may take a little longer.)

## Log into BrightFish Reading

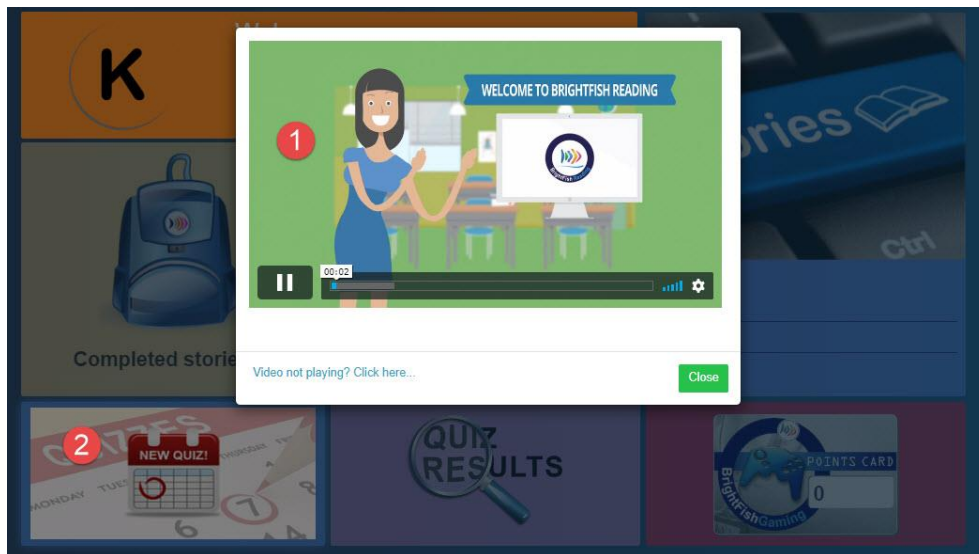
Teachers	Students
<p>1. Launch Chrome or another supported browser and type the BrightFish teacher link: <a href="https://admin.brightfishlearning.com">https://admin.brightfishlearning.com</a></p> <p>Add it to your favorites or drag the shortcut to your desktop</p>	<p>Launch Chrome or another supported browser and type the BrightFish student link: <a href="https://go.brightfishlearning.com">https://go.brightfishlearning.com</a></p> <p>Add to favorites or drag the shortcut to your desktop.</p>
<p>2. Type in your username: assigned by BrightFish (e.g. email address, teacher ID) Then type in your password: 123 (change it at any time in your Profile settings) Press Teacher Login to enter your page.</p>	<p>2. Type in your username: assigned by BrightFish or school administrator. Then type in the password: as assigned. Press Student Login to enter your page.</p>
<p>3. View your class roster in the Classes tab – select “Manage class roster” from the left sidebar menu. From here, you can view and export your roster, make changes and re-set class passwords.</p> <p><b>Note:</b> passwords are encrypted and are not displayed. You will have been given the school password. If you want to change it, you can do so by class in the Classes tab or for an individual student in the Users tab.</p>	<p><b>Troubleshooting Tips:</b></p> <p>1. Error message: “We couldn’t find your account.” Either the student is not enrolled OR the username has been mistyped. Confirm the username in the Class roster and try again.</p> <p>2. Error message: “Wrong password.” Ask the student to retype the password. If it still doesn’t work, change the password for the student in the Users tab of your page. Change the password for the entire class using the “Change all passwords” button in the Class roster.</p>

# DAY 1 CHECKLIST: BRIGHTFISH READING

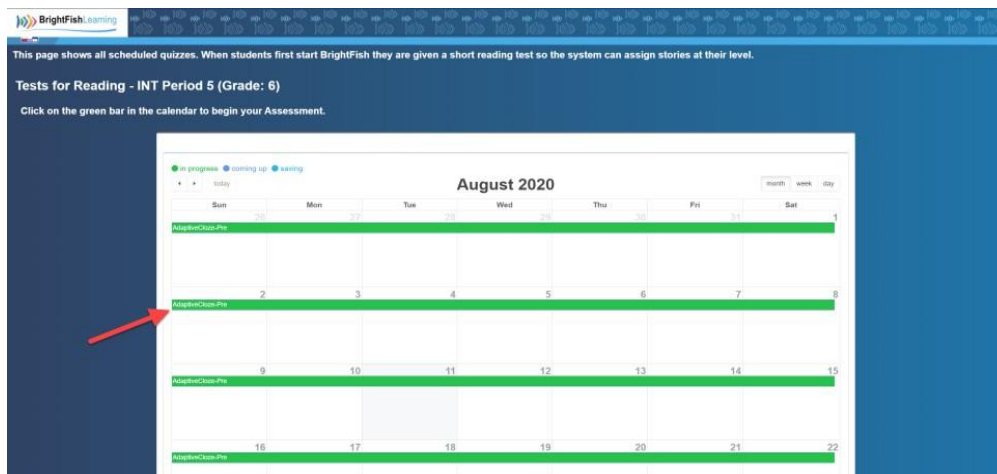
## Taking the Adaptive Cloze Test

To start the test, students will click on the New Quiz icon on their dashboards. The system will begin with a passage at a student's assigned grade level and then present a series of passages (up to 4) to find each student's independent, instructional and frustration reading levels.

**Step 1:** After watching the video and tutorial, click on the Quizzes Tile that says New Quiz.

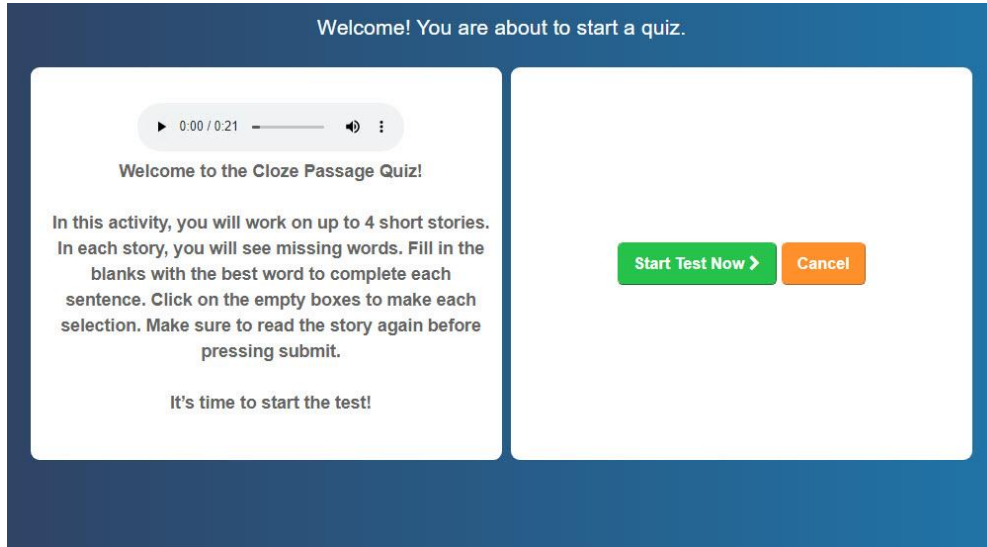


**Step 2:** Students will now see a calendar with a green bar. Click on the green bar to launch the test.

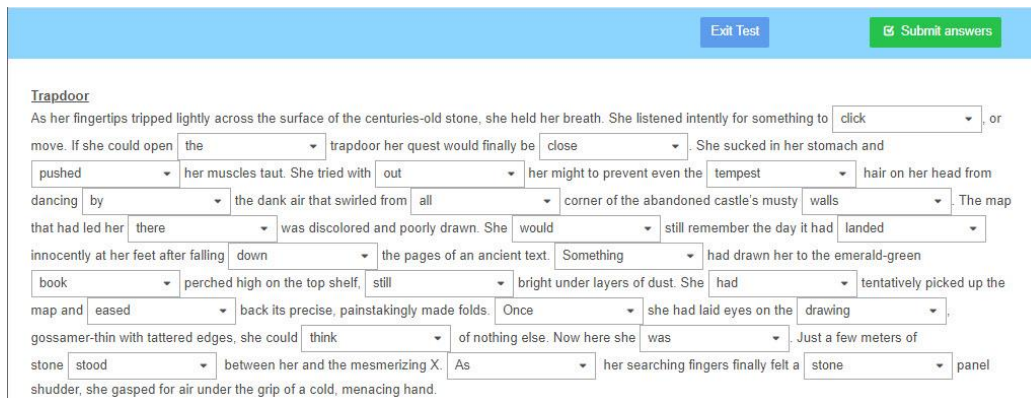


# DAY 1 CHECKLIST: BRIGHTFISH READING

**Step 3:** Students will see a dialog box that introduces the test. Click “Start Test Now” to begin.

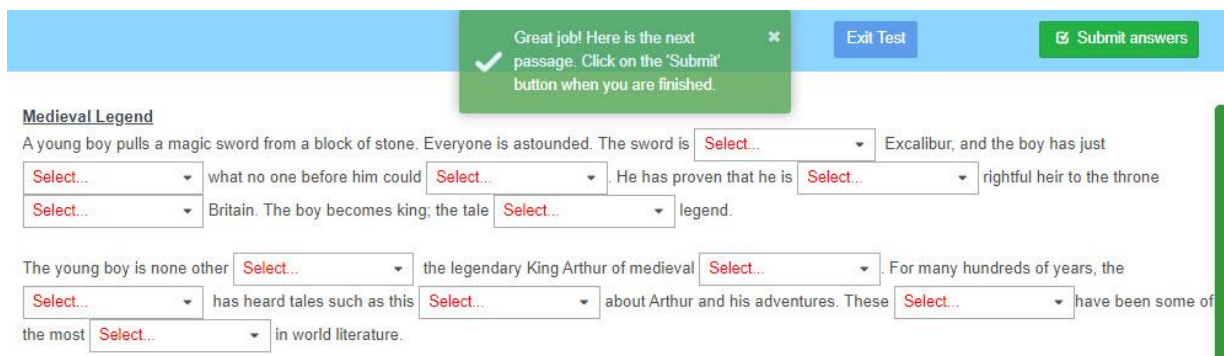


**Step 4:** The first test passage is assigned at the student’s grade level, based on its certified Lexile® measure (e.g. 4<sup>th</sup> grade test passages are in the 740L to 800L range). Students will click on the missing word to choose an answer from a drop-down menu that contains the correct response and two distractors. Once they fill in all of the missing words, students will select the “Submit Answers” button at the top to continue to the next passage.



# DAY 1 CHECKLIST: BRIGHTFISH READING

**Step 5:** The next passage will appear (either 1 grade above the previous passage or 1 grade below, depending on the score on the first passage). Students will fill in the missing words, then click Submit Answers to continue to the next passage. Students may complete up to 4 passages in total.



**Step 6:** Once the test is done, students will submit their test as final, which will take them back to the main dashboard screen. If students save and exit the test without submitting it as final, all work will be saved. They will click on the Quizzes tile the next time they log in to finish the test.

## Technical Specifications Reference

Firewall Access	<ul style="list-style-type: none"> <li>• <a href="https://*.brightfishlearning.com">https://*.brightfishlearning.com</a></li> <li>• <a href="https://*.tawk.to">https://*.tawk.to</a> (for integrated teacher chat support)</li> <li>• <a href="https://google.com/jsapi/*">https://google.com/jsapi/*</a> (for teacher reports)</li> <li>• <a href="https://www.gstatic.com">https://www.gstatic.com</a> (Google static content cache)</li> <li>• <a href="https://google.com/recaptcha/*">https://google.com/recaptcha/*</a> (Google SPAM control)</li> </ul>
Video Files	<ul style="list-style-type: none"> <li>• streams videos through <a href="https://*.brightfishlearning.com">https://*.brightfishlearning.com</a></li> <li>• Vimeo videos on <a href="https://player.vimeo.com/video">https://player.vimeo.com/video</a></li> </ul>
Supported Browsers	<ul style="list-style-type: none"> <li>• Chrome (latest) – recommended browser</li> <li>• Edge (IE 11 or below not supported)</li> <li>• Safari (latest)</li> <li>• FireFox (latest)</li> <li>• Touchscreen supported on all activities</li> </ul>
Supported Devices	<ul style="list-style-type: none"> <li>• iPad 4 and later, iOS 10 or later (landscape mode)</li> <li>• Laptops and Chromebooks (minimum resolution 1366x768)</li> <li>• Any desktop computer (minimum resolution 1024x768)</li> </ul>
Headphones	<ul style="list-style-type: none"> <li>• Any earbud headset</li> </ul>

**Need help? Start a live chat from your teacher page or email us at [support@brightfishlearning.com](mailto:support@brightfishlearning.com).**